

JEPPG4 275 CARBON

EXPLODED DRAWING | BOM

HEADSET DIMENSIONS

TOP: IS 42 | 28,6 (1 1/8")
 BOTTOM: IS 52 | 40 (1.5")

SHOCK INSTALLATION LENGHT

230 X 60/65 MM

SHOCK HARDWARE

FRONT: Ø10X20MM
 REAR: Ø10X40MM

SEATPOST DIAMETER

31,6MM

SEATPOSTCLAMP INNER DIAMETER

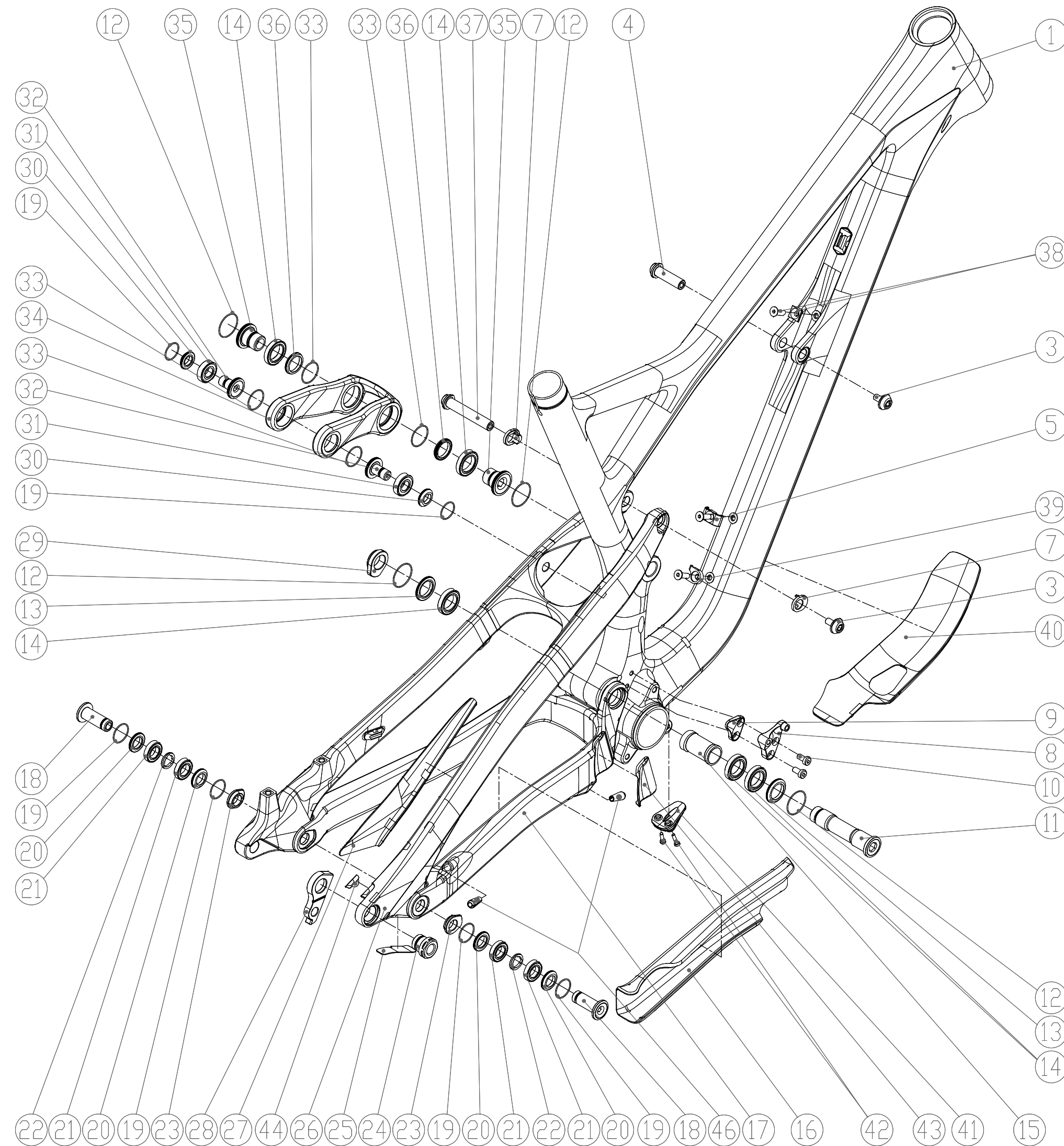
35,6MM

BREAKMOUNT STANDARD

POSTMOUNT 180

BOTTOM BRACKET STANDARD

92MM GXP PRESSFIT BOTTOM BRACKET

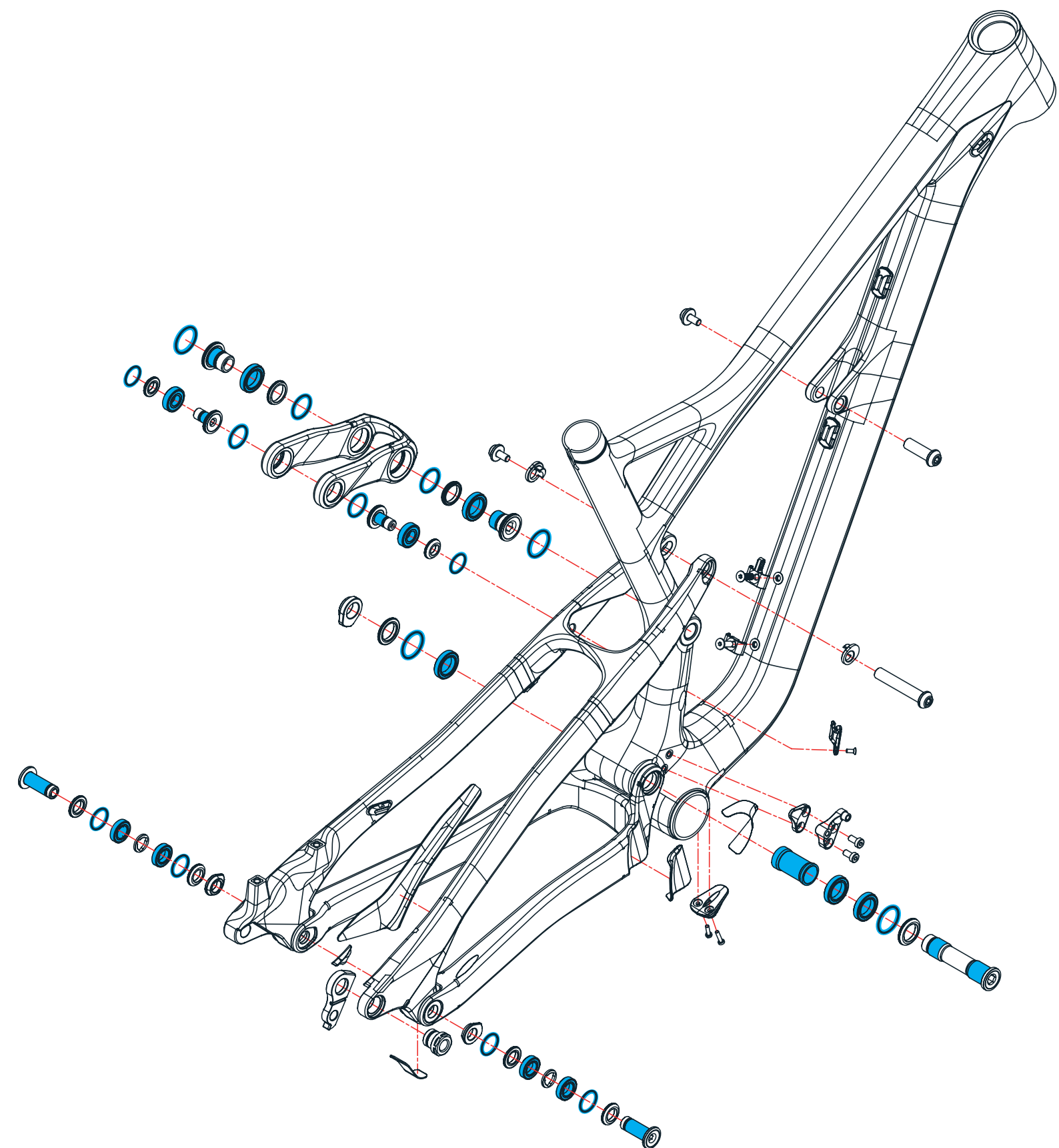


POS.	Part description	Quantity
1	Front Triangle	1
3	Shockbolt Screw	2
4	Shockbolt front Ø10x33,5mm	1
5	2 in 1 Cableclamp	1
7	Flipchip 4mm	2
8	E-Type Adapter	1
9	E-Type Adapter Cover	1
10	Socket head thin cap screw M5x10mm DIN 7984	2
11	Mainpivot Axle	1
12	O-Ring Ø22x1 NBR	4
13	Distancewasher Ø26x3,5mm	2
14	Deep groove ball bearing 61803 2RS (full compliment)	5
15	Distancesleeve Ø17x38	1
16	Chainstayprotector	1
17	Chainstay	1
18	Horst Link pivot Axle	2
19	O-Ring Ø16x1 NBR	6
20	Distancewasher Ø21x3,5mm	4
21	Deep groove ball bearing 61801 2RS (full compliment)	4
22	Distancesleeve Ø12x2mm	2
23	Horst Link pivot Nut	2
24	Mech hanger screw	1
25	Rear derailleur protection	1
26	Seatstay	1
27	Seatstay protector	1
28	Mech hanger	1
29	Main pivot Nut	1
30	Distancewasher Ø19x4mm	2
31	Deep groove ball bearing 61900 2RS (full compliment)	2
32	Upper link bolt	2
33	O-Ring Ø19x1mm NBR	4
34	Link	1
35	Lower link bolt	2
36	Distancewasher Ø23x3,5mm	2
37	Shockbolt rear Ø10x58mm	1
38	2 in 1 Cable Guide	1
39	Single Cable guide	1
40	Downtube Protector	1
41	Cableouttakeclamp D/T	1
42	Socket head thin cap screw M3x12 DIN 7984	2
43	Chainringprotection C/S	1
44	Chainsuck protector S/S	1
46	Cable Plug	2



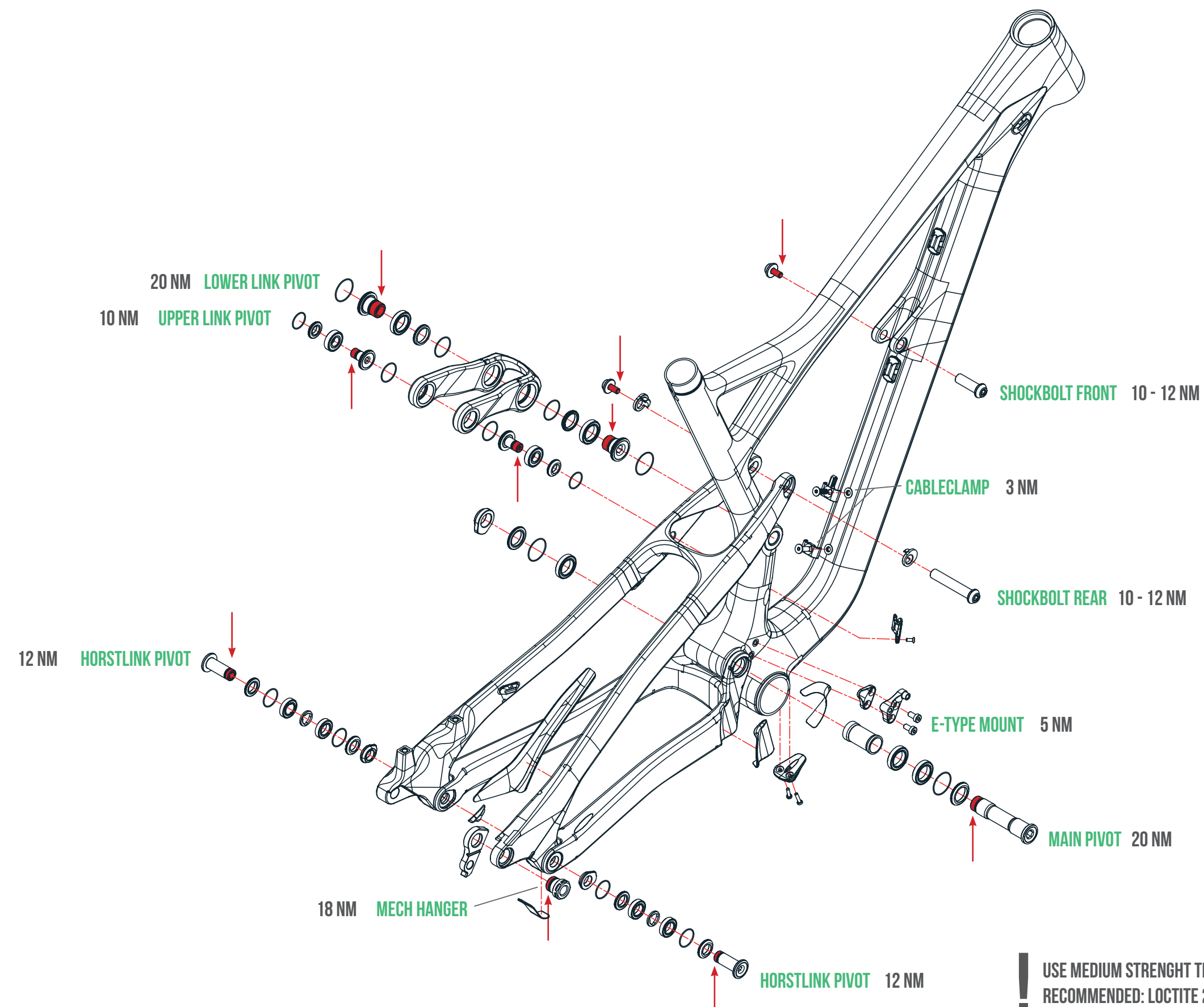
TORQUE/THREADLOCKER & GREASE INFORMATION

GREASE



USE CARBON SUITABLE GREASE ONLY
RECOMMENDED: GLEITMO 585 K

THREADLOCKER



USE MEDIUM STRENGTH THREADLOCKER
RECOMMENDED: LOCTITE 243

